

EBRIS

We know
books

Cristina Beldianu

Estera Ținteșan

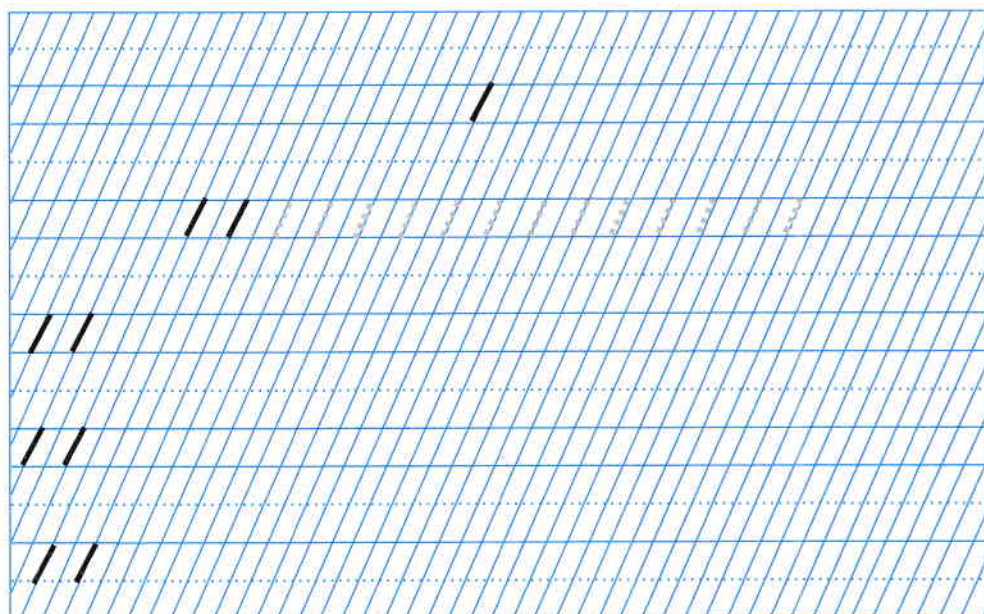
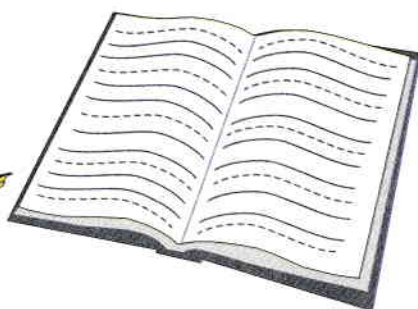
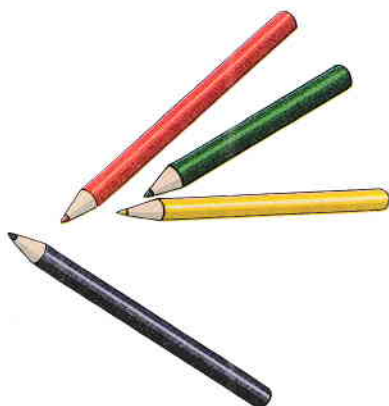
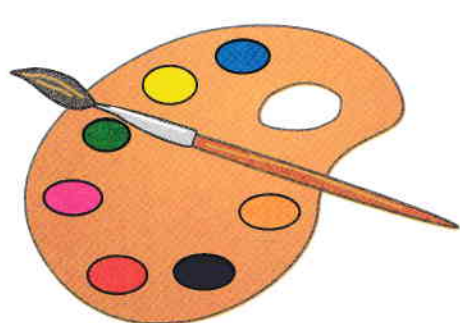
Pregătim mâna pentru scris

Sugestii pentru *Jocuri și activități alese*



EDITURA ROXEL CART

LINIUȚE SIMPLE DISTANȚATE



LINIUȚE SIMPLE NEDISTANȚATE



A large rectangular area with a blue grid pattern. The grid consists of solid blue lines forming a grid, with a dashed blue line running horizontally through the middle of each row. There are several sets of short, black, slanted lines drawn on the grid, serving as examples for handwriting practice. The first set is a single slanted line. The second set is three slanted lines. The third set is two slanted lines. The fourth set is two slanted lines. The fifth set is two slanted lines.

DOUĂ LINIUȚE, PUNCT



Handwriting practice area on blue-lined paper. It contains several rows of tracing exercises for the double line and dot stroke (//•//•):

- Row 1: A single double line and dot stroke (//•//•) centered on the line.
- Row 2: A series of double line and dot strokes (//•//•) connected by a dotted line for tracing.
- Row 3: A double line and dot stroke (//•//•) on the left, followed by a blank space.
- Row 4: A double line and dot stroke (//•//•) on the left, followed by a blank space.
- Row 5: A double line and dot stroke (//•//•) on the left, followed by a blank space.